

THE UNITED REPUBLIC OF TANZANIA,
PRIME MINISTER'S OFFICE
REGIONAL ADMINISTRATION AND LOCAL GOVERNMENTS



MARTIN LUTHER SCHOOL

P. O. Box 1786 Dodoma. Tel. +255 26 2395029, +255 784 449098

Fax +255 26 2395030 (www.martinlutherschooldodoma.sc.tz)

"High Quality Education for the New Generation"

STANDARD III

SCIENCE – HOLIDAY PACKAGE JUNE 2026

PUPIL'S NAME: _____

INSTRUCTIONS

- 1. Remember to write your three names properly.**
- 2. Answer all the questions as per instructions.**
- 3. Read all questions carefully before answering.**
- 4. This holiday package should be returned to school when we open**

NAME: _____ CLASS III: _____

SECTION A:
(Each question 1 mark)

From questions 1 to 15, choose the most correct answer among the given alternatives and write it in the space provided

1. Matter is anything that has mass and occupies space. If matter takes up space it has:
A. Volume B. Shape C. Mass D. Color []
2. When you put coin in water it sinks. Which property makes coin to sink in water?
A. Coin is small in size B. Coin is heavier than water
C. Coin has a circle shape D. Coin has a circle shape []
3. Ethan was asked by his teacher to list example of matter which is in gaseous states. Among the following what was his correct answer?
A. Water B. Air C. Soda D. Juice []
4. My mother wanted to change water into ice. Water starts to freeze at which temperature?
A. 10°C B. 0°C C. 100°C D. 1000°C []
5. Madam Eva asked standard three pupils to define word energy? Among the following what will be their correct answer?
A. Energy is anything
B. Energy is everything that surrounding us
C. Energy is the ability to do work
D. Energy is anything that occupies space and has size []
6. There are three states of matter which are solid, liquid and gas. Which one among these is the lightest state of matter?
A. Solid state B. Liquid state C. Gaseous state D. Ice []
7. Which set among the following sets of objects sink in water?
A. A sewing needle, iron and a coin B. Plastic vessel ship and boat
C. A ship, lemon and a ball D. A stone, a ship and boat []
8. Matter can change from one state to another. Which one of the following causes the change of state of matter?
A. Mass B. Volume C. Pressure D. Energy []
9. Freezing is among the process involved in changing the state of matter. freezing is the process of changing water into:
A. Steam B. Vapor C. Ice D. Liquid []
10. Madam Victoria asked class three pupils to mention materials which are in gaseous state. Which among the following was the correct answer from pupils?
A. Cooking oil B. Smoke C. Telephone D. Tape water []

NAME: _____ **CLASS III:** _____

11. Which of the following is the correct group of flowering plants?
A. Sunflower, pine, beans and mangoes B. Wheat, beans, pine and mangoes
C. Peas, beans, pine and mangoes D. Potatoes, plant, cedar and coconut []
12. Movement in plants involves only certain parts and not the whole plant. Which parts of plants are responsible for movement in plant?
A. Branches, stem and leg B. Branches, bending and stem
C. Temperature, sunlight and root D. Root, branches and stem []
13. Pine tree and fern plants are plants that do not bear flower. These plants, belong to which group of plants?
A. Dicotyledonous B. Non – flowering plant
C. Monocotyledonous D. Flowering plants []
14. The following are the main parts of plant EXCEPT;
A. Roots B. Leaves C. Stem D. Cellulose []
15. Which one of the following plants characteristics differentiates them from animals?
A. They make their own food B. They reproduce
C. They need air D. They respond []

From questions 16 to 20, match the items in LIST A with their corresponding response in LIST B by writing your answers in the space provided.

NO.	LIST A	ANSWERS	LIST B
16	Photosynthesis	[]	A. The development of seed into mature plant.
17	Flowering plant	[]	B. The process whereby plant makes their own food.
18	Germination	[]	C. Plants that bear flowers.
19	Non – flowering plant	[]	D. Sepals, petals and receptacles.
20	Parts of flower	[]	E. The plants that do not bear flower.

NAME: _____ **CLASS III:** _____

From questions 21 to 25, match the items in LIST A with their corresponding items in LIST B. Write your answers in the space provided.

NO.	LIST A	ANSWERS	LIST B
21	Ear drum	[]	A. Help us to detect changes in our environment
22	Fat layer	[]	B. Anything that have life
23	Nose	[]	C. Part of ear that possess sound waves to the inner ear
24	Sense organs	[]	D. Middle part of skin
25	Living things	[]	E. Inner layer of skin
			F. Detect the smell of burning materials

From questions 26 to 30, match the items in LIST A with their corresponding items in LIST B. Write your answers in the space provided.

NO.	LIST A	ANSWERS	LIST B
26	Caring for the eye	[]	A. Collects the sound waves and direct them into the middle ear
27	A scientist who deals with animals	[]	B. Veterinarian
28	Outer ear	[]	C. Are the examples of things found in our environment
29	Heat touch, texture, vibration and pressure	[]	D. Note rubbing or cleaning your eyes with dirty hand or materials
30	Air, water, soil houses, animals, people and car	[]	E. Are the conditions which skin can feel or sense

NAME: _____ **CLASS III:** _____

From question 31 to 48 choose the correct answer from the box given below and write it in the space provided.

Engineering, teaching, sensitivity, hair,	pharmacy, nursing, growth, nose,	botanist, reproduction, movement, stimulus,	veterinary medicine, excretion, nutrition, sense,	medicine, breathing, ears, eyes, skin.
--	---	--	--	---

31. The carrier that deals with mixing and dispensing drugs _____
32. The career that deals with diagnosing and treatment of animals _____
33. The career that deals with diagnosing human diseases and give them treatment _____
34. The career that deals with designing and building structures like bridges and towers _____
35. The career that deals with helping learners to get knowledge on a certain line of learning _____
36. The career that deals with scientific study of plants _____
37. The ability of living organisms to change position or move from one place to another is known as _____
38. The ability of living organisms to produce the young ones of the same species is called _____
39. The remove of waste products from the body of an organism is referred is _____
40. The process of taking in and taking out air is called _____
41. Increase in height and weight of an organisms is known as _____
42. The process by which living things obtain and use food for growth, metabolism and repair is termed as _____
43. Musa was passing near a flower garden and detected a good smell of flowers. Which sense organ enabled him to detect the smell of flowers? _____
44. A farmer wanted to feel the texture of the soil. Which sense organ will he use? _____
45. My mother gave me a grape juice. Which sense organ will I use to detect its taste? _____

NAME: _____ **CLASS III:** _____

46. When I woke up early in the morning, I had the cock crowing. Which sense organ did I use to detect the sound of a cock? _____
47. When my mother went to the market, she wanted to choose the ripe oranges by looking their colors. Which sense organ did my mother use to detect color of oranges? _____
48. Anything that can make an organism to respond to it is known as _____

SECTION B:

(Each question 1 mark)

From questions 49 to 54, Arrange the following parts of an ear in a logical order from outer ear to the inner ear by writing letters A, B, C, D, E, and F in the brackets provided.

49. Ear canal []
50. Cochlea []
51. Eardrum []
52. Ear ossicles []
53. Pinna []
54. Meatus []

You have been provided with six (55 to 60) jumbled parts of the tongue starting from the tip of the tongue. Arrange the steps in the correct sequence by giving them letters A,B, C, D, E, and F in the spaces provided.

55. Bitter []
56. Sour []
57. Pharynx []
58. Salty []
59. Umami []
60. Sweet []

From questions 61 to 66, You have been provided with the jumbled stages of development of human being. Arrange the steps in the correct sequence by giving them letters A, B, C, D, E, and F in the space provided.

61. Elderly []
62. Adulthood []
63. Middle and late childhood []
64. Early childhood []
65. Infancy []

66. Prenatal development []

NAME: _____ CLASS III: _____

Observe the following pictures and answer the questions 67 to 72 that follows:



A



B



C



D



E

67. Which sense organ is used by the person in picture A? _____

68. Which sense organ is used by the person in picture B? _____

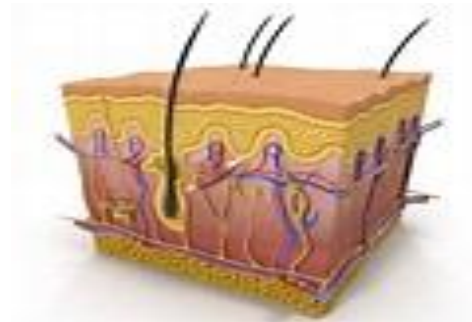
69. Which sense organ is used by the person in picture C? _____

70. Which sense organ is used by the person in picture D? _____

71. Which sense organ is used by the person in picture E? _____

72. Identify the stimuli for the picture shown by picture C above; _____

Observe the following pictures and answer the questions 73 to 78 that follows:



73. Identify the sense organ shown above: _____

74. Name the outer layer of the sense organ above: _____

75. Name the inner layer of the sense organ above: _____



76. Write any function of the sense organ above: _____

77. Explain how do you care the sense organ above? _____

78. Write any stimuli detected by sense organ above: _____

NAME: _____ **CLASS III:** _____

From questions 79 to 83, observe carefully the pictures of animals you are given and write their correct group of vertebrates among the five groups of vertebrate animals.

ANIMAL	GROUP
79. 	
80. 	

81.



NAME: _____ CLASS III: _____

ANIMAL

GROUP

82.



83.



From questions 84 to 100, fill in the blanks by writing the correct answer in the space provided.

84. A person who specialized in diagnosis of diseases and treatment of people is called? _____

85. Anything that has mass and occupies spaces like water, book and oxygen is called _____
86. The ability to do work is termed as _____
87. A person who does scientific work is named as _____
88. Science is divided into main three branches, write any branch of science? _____
89. What is the importance of Science? _____
90. In which states of matter the particles are far apart from each other? _____

NAME: _____ **CLASS III:** _____

91. The primary source of energy is _____
92. What is the example of liquid state? _____
93. Which sense organ help us to hear sound when listening music? _____
94. Which sense organ help us detect the nice smell of food? _____
95. Which sense organ help us detect delicious test of the meat? _____
96. Human beings are in which group of vertebrates? _____
97. Which characteristics of living things enable us to recognize various stimuli in the environment?

98. Which characteristic of living things is shown when a person increases in weight? _____
99. Which characteristics of living things is shown by sweating and production of latex and gum by plants? _____
100. Which characteristics of living things enable them to increase in numbers? _____

“Education is my life (Proverbs 4:13)”

Mobile: 0784 449 098 * 25526 239 5029, Web: www.martinlutherschooldodoma.sc.tz