

THE UNITED REPUBLIC OF TANZANIA,  
PRIME MINISTER'S OFFICE  
REGIONAL ADMINISTRATION AND LOCAL GOVERNMENTS



## MARTIN LUTHER SCHOOL

P. O. Box 1786 Dodoma. Tel. +255 26 2395029, +255 784 449098

Fax +255 26 2395030 ([www.martinlutherschooldodoma.sc.tz](http://www.martinlutherschooldodoma.sc.tz))

*"High Quality Education for the New Generation"*

### STANDARD IV

### SCIENCE – HOLIDAY PACKAGE JUNE 2026

PUPIL'S NAME: \_\_\_\_\_

#### INSTRUCTIONS

1. Remember to write your three names properly.
2. Answer all the questions as per instructions.
3. Read all questions carefully before answering.
4. This holiday package should be returned to school when we open.

**SECTION A:**

**Answer all questions from this section**

**(Each question 1 mark)**

**Answer question 1 to 15, by choosing the letter of the correct answer and write it in the space provided.**

1. What characteristics of lizards differentiate them from frogs?  
A. Frogs live only on land                      B. Lizards lives only on land  
C. Frogs live only in water                      D. Lizards lives only only in water    [     ]
2. Scientists specialized in preparing, dispensing and managing drugs are called;  
A. Chemists                                      B. Engineers  
C. Pharmacists                                      D. Doctors                                      [     ]
3. Which of the following is an important practice for maintaining good personal hygiene?  
A. Sharing towel with others  
B. Brushing your teeth twice a day  
C. Wearing the same clothes for several days  
D. Avoiding showers to save water                                      [     ]
4. Which of the following best describes a balanced diet?  
A. Eating variety of food from all food groups in the right proportion  
B. Consuming food high in sugar and fat  
C. Skipping meals to maintain weight  
D. Eating only fruits and vegetables                                      [     ]
5. Why are elderly advised to eat small amount of energy giving foods in their diet?  
A. To protect them from illness  
B. To replace old and damaged cells  
C. To avoid gaining too much energy  
D. To avoid gaining to much weight                                      [     ]
6. Which of the following represents a set of inner part of the eye?  
A. Iris, pupil, lens, and eyelashes  
B. Retina, iris, pupil and lens  
C. Lens, retina, iris and eyebrows  
D. Eyelashes, eyebrows, pupil and retina                                      [     ]

NAME \_\_\_\_\_ CLASS IV \_\_\_\_\_

7. Which of the following is the correct group of flowering plants?  
A. Sunflower, maize, pine and beans  
B. Wheat, beans, pine and mangoes  
C. Peas, beans, pine and mangoes  
D. Potato plant, cedar, coconut and baobab trees [     ]
8. Which of the following is an example of organism whose body is streamlined and covered with feathers?  
A. Mosquito B. Goat C. Butterfly D. Eagle [     ]
9. Standard three pupils were asked to bring invertebrate animals for the purpose of doing scientific investigation. Which of the following animal was not brought by the pupils?  
A. Snail B. Grasshopper C. Earthworm D. Fish [     ]
10. The ability of living things to detect and respond to stimuli in the environment is known as:  
A. Adaptation  
B. Ecology  
C. Irritability  
D. Growth [     ]
11. What is the name given to the changes in shapes and behaviour that insects undergo during their development?  
A. Reproduction                      B. Metastasis  
C. Photosynthesis                      D. Metamorphosis [     ]
12. Meat, fish, beans, milk and eggs are food which contain  
A. Carbohydrates                      B. Vitamins  
C. Proteins                                D. Minerals [     ]
13. Maria was asked by her mother to prepare a balanced meal. Which list below was she supposed to prepare?  
A. Fish, rice, spinach, orange, coconut, water  
B. Milk, meat, fish, eggs, cabbage  
C. Cassava, tea, bread, eggs, potatoes  
D. Spinach, mangoes, fish, eggs, papaya [     ]

NAME \_\_\_\_\_ CLASS IV \_\_\_\_\_

14. Which among the following food nutrients are found in protective foods?

- A. Protein nutrients      B. Carbohydrates nutrients  
 C. Fats and oil nutrients      D. Vitamin and minerals nutrients      [      ]

15. What causes changes in the states of matter?

- A. Temperature      B. Time      C. Electricity      D. Energy      [      ]

Answer questions 16 to 20, by matching benefits of nutrients in column “A” with their corresponding nutrients in column “B”. Write your answer in the space provided.

COLUMN A	ANSWERS	COLUMN B
16. Nutrients that provide the body with energy		A. Minerals and water
17. Nutrients that help the body to grow and repair worn – out tissues		B. Fats and oil
18. Nutrients that protect the body against diseases		C. Carbohydrates
19. Nutrients that provide the body with heat and energy		D. Vitamins
20. Nutrients that strengthen our bones and teeth		E. Minerals
		F. Proteins
		G. Protein and carbohydrates

From questions 21 to 25, match the items in list “A” with their correct responses in list “B” by writing the letter of the correct answer in the brackets provided.

LIST A	ANSWERS	LIST B
21. A state of matter which is light		A. Soda
22. A state of matter with fixed shape		B. Gaseous state
23. An example of matter in a solid state		C. Steam
24. A state of matter which takes a shape of a container		D. Liquid state
25. An example of matter in gaseous state		E. Molecule
		F. Chalk
		G. Solid state

NAME \_\_\_\_\_ CLASS IV \_\_\_\_\_

Answer question 26 to 31, by matching explanations on symptoms of diseases in list “A” with their respective diseases in list “B”. Write the letter of the correct answer in the bracket provided.

LIST A	ANSWERS	LIST B
26. Shortness of breath with a wheezing or whistling sound		A. Chicken pox
27. Feeling thirsty even after drinking enough water		B. Cholera
28. Frequent coughing for two weeks or more		C. Asthma
29. Itching rashes that turn into blisters with pus or fluid		D. Malaria
30. Passing stool that looks like rice water		E. Diabetes
		F. Cancer
		G. Tuberculosis
31. The state of matter with specific shape		H.
		I. Solid state

Answer questions 32 to 49 by choosing the correct profession from the box and then write it in the appropriate space provided.

Medical doctor, veterinarian, botanist, pharmacist, engineer, chemist, teacher, Reproduction, excretion, breathing, sensitivity, growth, movement, nutrition, Cholera, Cancer, Schistosomiasis, HIV/AIDs, Chicken pox, Malaria, Asthma, Diabetes.

32. A scientist who deals with designing and construction of structures such as bridges and buildings \_\_\_\_\_

33. A scientist who prepares, dispenses and manages drugs is called \_\_\_\_\_

34. A scientist who diagnoses and treats sick people in hospital \_\_\_\_\_

NAME \_\_\_\_\_ CLASS IV \_\_\_\_\_

35. A scientist who deals with plants \_\_\_\_\_
36. A scientist who diagnoses and treats animal diseases \_\_\_\_\_
37. A scientist who deals with chemical research and experiments  
\_\_\_\_\_
38. The ability of an organism to change position or move from one place to another  
\_\_\_\_\_
39. The ability of an organism to produce young ones of the same species is called  
\_\_\_\_\_
40. The removal of waste products from the body of an organism is referred to as  
\_\_\_\_\_
41. The process of taking in and taking out air \_\_\_\_\_
42. Increase in height and weight of an organism is known as \_\_\_\_\_
43. The process by which living things obtain and use food for growth, metabolism and repair is termed as: \_\_\_\_\_
44. Which disease is caused by plasmodium? \_\_\_\_\_
45. Which disease is transmitted by a housefly? \_\_\_\_\_
46. Which disease is transmitted through air or direct contact with an infected person?  
\_\_\_\_\_
47. Which disease is caused by abnormal growth of body cell which may lead to development of tumours? \_\_\_\_\_
48. Which disease is triggered by allergies such as dust, smoke, pollens, perfumes and soap?  
\_\_\_\_\_
49. Which disease is transmitted sexually? \_\_\_\_\_

### SECTION B

Answer all questions from this section  
(Each question 1 mark)

The following are the jumbled steps of cleaning the body. Arrange them in the correct order by writing letters A, B, C, D, E and F in the space provided.

50. Wet the body using clean water and apply soap [     ]
51. Rinse the body with clean water [     ]

- 52. Prepare the items for taking a bath [     ]
- 53. Apply lotion on the body [     ]
- 54. Dry the body using a clean dry towel [     ]
- 55. Scrub the body using a soft brush [     ]

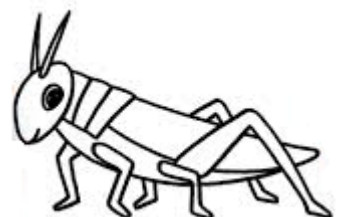
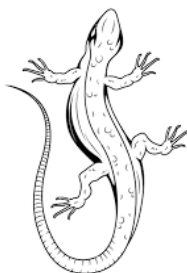
**From questions 56 to 61, Arrange the following parts of an ear in a logical order from outer ear to the inner ear by writing letters A, B, C, E, and F in the space provided.**

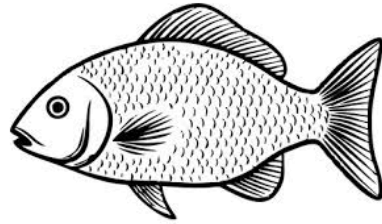
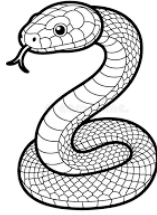
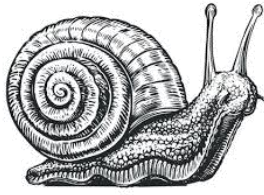
- 56. Ear canal [     ]
- 57. Cochlea [     ]
- 58. Eardrum [     ]
- 59. Ear ossicles [     ]
- 60. Pinna [     ]
- 61. Meatus [     ]

**From question 62 to 67, Rearrange the following statements that explain about procedures of a scientific investigation in a logical order by giving them letter A, B, C, D, E, and F in the space provided.**

- 62. Search for information from various sources [     ]
- 63. Write the report of scientific investigation [     ]
- 64. Establish the reason as to why scientific investigation is needed [     ]
- 65. Draw the conclusion of your experiment [     ]
- 66. Analyse and interpret the information collected [     ]
- 67. Predict the possible answers of the problem [     ]

**Observe the following animals shown in the pictures and answer the questions 68 to 73 that follow.**





68. By using names identify an animal that move by jumping from the pictures above:

\_\_\_\_\_

69. From the pictures above identify the crawling animal which has dangerous poison.

\_\_\_\_\_

70. Which animal has hard shell on its body? \_\_\_\_\_

71. Which animals uses the skin and lungs for breathing?

\_\_\_\_\_

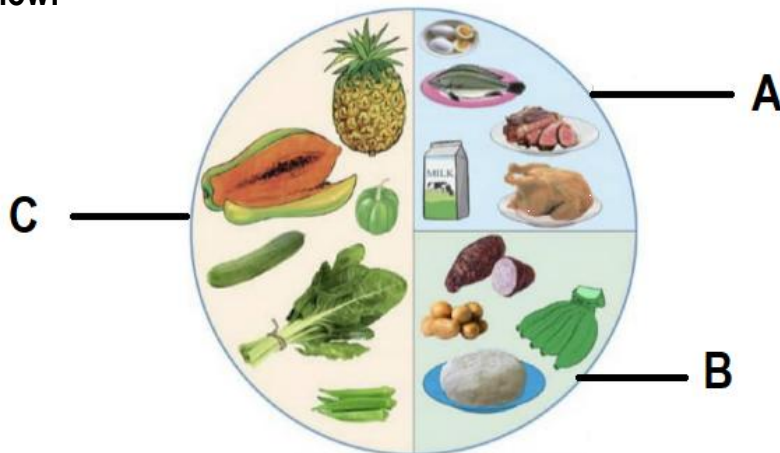
72. Which animal uses gills for breathings?

\_\_\_\_\_

73. Which animal is cold blooded and lay eggs on land?

\_\_\_\_\_

Observe the following food groups and then answer the questions 74 to 79 that follow:



74. Identify the food group marked by letter A: \_\_\_\_\_

75. Which nutrients are found in the food group marked by letter C?

\_\_\_\_\_

NAME \_\_\_\_\_ CLASS IV \_\_\_\_\_

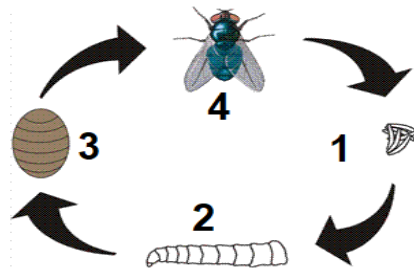
76. Which group of people is advised to take large quantity of the food group marked by letter B? \_\_\_\_\_

77. What is the function of the nutrients found in the food group marked A in the human body?  
\_\_\_\_\_

78. Why are the food marked B and C important for a sick person?  
\_\_\_\_\_

79. What will happen if a person does **not** eat food in group marked C?  
\_\_\_\_\_

**Observe the lifecycle of insects shown in the picture below and answer the questions 80 to 85, that follows.**



80. Which type of metamorphosis is shown in the figure above? \_\_\_\_\_

81. Mention any insect that undergo the lifecycle shown in the figure above apart from the one shown. \_\_\_\_\_

82. Write the name of another type of metamorphosis in insects apart from the one shown above \_\_\_\_\_

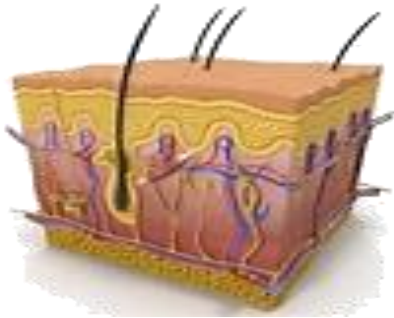
83. Write the name of the stage represented by number 2 in the figure above.  
\_\_\_\_\_

84. Mention one disease that can be transmitted by insects that undergo the type of metamorphosis shown above \_\_\_\_\_

85. Where does the insect shown on the picture lay its eggs?  
\_\_\_\_\_

NAME \_\_\_\_\_ CLASS IV \_\_\_\_\_

Observe the following pictures and answer the the questions 86 to 91, that follows:



86. Identify the sense organ shown above: \_\_\_\_\_

87. Name the outer layer of the sense organ  
above: \_\_\_\_\_

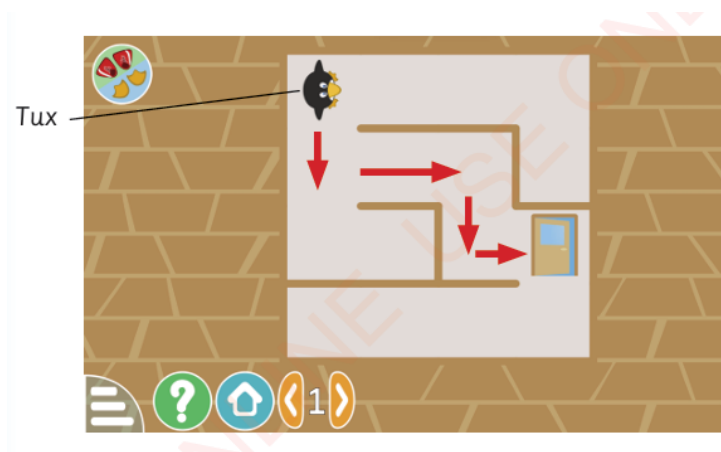
88. Name the inner layer of the sense organ  
above: \_\_\_\_\_

89. Write any function of the sense organ above: \_\_\_\_\_

90. Explain how do you care the sense organ  
above? \_\_\_\_\_

91. Write any stimu detected by sense organ above: \_\_\_\_\_

Observe the following pictures and answer the questions 92 to 97 that follows:



NAME \_\_\_\_\_ CLASS IV \_\_\_\_\_

**Questions:**

92. Which computer game is shown by the diagram above? \_\_\_\_\_

93. What is the aim of the computer game shown above? \_\_\_\_\_

94. From which educational software you can play the computer game above?  
\_\_\_\_\_

95. What is an example of games you can play from software you mentioned in (iii) above?  
\_\_\_\_\_

96. What is the duration to complete playing the game shown above?  
\_\_\_\_\_

97. What is the advantage of playing educational games to pupils?  
\_\_\_\_\_

**From question 98 to 100, fill in the blanks with correct answer:**

98. Mention the nutrient that gives the body energy: \_\_\_\_\_

**There are five sense organs in our body:**

99. Explain how you take care of your eyes  
\_\_\_\_\_

100. Which part of the eye prevent sweat, dust and other objects from entering the eye?  
\_\_\_\_\_

***“Education is my life” (Proverb 4:13)”***

Tel: + 255 26 239 5029/ + 255 784 449 098 website: [www.martinlutherschooldodoma.sc.tz](http://www.martinlutherschooldodoma.sc.tz)

