



THE UNITED REPUBLIC OF TANZANIA,  
PRIME MINISTER'S OFFICE  
REGIONAL ADMINISTRATION AND LOCAL GOVERNMENTS  
**MARTIN LUTHER SCHOOL**

P. O. Box 1786 Dodoma. Tel. +255 26 2395029, +255 784 449098

Fax +255 26 2395030 ([www.martinlutherschooldodoma.sc.tz](http://www.martinlutherschooldodoma.sc.tz))

*"Quality Education for the New Generation"*

**STANDARD V**

**SCIENCE & TECHNOLOGY– HOLIDAY PACKAGE  
JUNE, 2026**

**PUPIL'S NAME:** \_\_\_\_\_

**INSTRUCTIONS**

- 1. Remember to write your three names properly.**
- 2. Answer all the questions as per instructions.**
- 3. Read all questions carefully before answering.**
- 4. This holiday package should be returned to school when we open**

## SECTION A:

Answer all questions in this section.

(Each question 1 mark)

From question 1-25, choose the correct answer and write its letter in the space provided.

1. What may happen if enzymes are not produced? [     ]  
A. Food will be digested well     B. Digestion becomes difficult  
C. Absorption increases     D. Appetite improves  
E. The body becomes strong
  
2. Eating vegetables mainly helps digestion because they contain; - [     ]  
A. Proteins   B. Fats   C. Fibres     D. Sugar   E. Oils
  
3. Which part pushes food using muscular movement? [     ]  
A. Oesophagus   B. Liver   C. Gall bladder   D. Rectum   E. Teeth
  
4. A child with worms in the small intestine may suffer from;- [     ]  
A. Good appetite   B. Faster digestion   C. Increased energy   D. Malaria  
E. Poor absorption of nutrients
  
5. Why should pupils eat slowly? [     ]  
A. To waste time     B. To avoid hunger   C. To reduce saliva  
D. To improve digestion     E. To get good flavor
  
6. Which structure prevents food from entering the wind pipe? [     ]  
A. Tongue   B. Epiglottis   C. Teeth   D. Lips   E. Esophagus
  
7. Which sequence shows the correct movement of food?  
A. Mouth → oesophagus → stomach → small intestine  
B. Mout → stomach → oesophagus → intestine  
C. Stomach → mouth → intestine  
D. Mouth → intestine → stomach  
E. Smal intestine → stomach →oesphagus → mouth [     ]

8. A child complains of pain after eating fast. Which organ is most affected?  
A. Heart B. Lungs C. Stomach D. Kidney E. Liver [ ]
9. Why are children advised to eat large amount of body building food? [ ]  
A. Because it gives them energy B. It provides them with heat energy  
C. It helps them in growth D. It helps to repair their body  
E. It helps in protection against
10. Mariam was asked to mention nutrients that found in vegetables and fruits.  
Which one did she mention correctly? [ ]  
A. Protein B. Vitamin C. Carbohydrates D. Lipids E. Minerals
11. Which among the following is a disease caused by abnormal growth  
of cells inside the body ? [ ]  
A. Diabetes B. Asthma C. Malaria D. Tuberculosis E. Cancer
12. What is the name of the part of the digestive system where the breakdown  
of food begins? [ ]  
A. Mouth cavity B. Esophagus C. Stomach D. Small intestine  
E. Large intestine
13. If you are asked to mention a chemical substance that acid the digestion  
of food in digestive system. Which one will you mention? [ ]  
A. Nutrients B. Chyme C. Enzymes D. Hydrochloric acid E. Lymph
14. In which of the following parts of the digestive system does the preparation  
of faeces for elimination from the body take place? [ ]  
A. Anus B. Large intestine C. Stomach D. Small intestines  
E. Oesophagus
15. Blessing was advised to eat foods which build the body, promote growth,  
make new cells. Which group of food is that? [ ]  
A. Vitamins B. Carbohydrates C. Proteins D. Lipids E. Minerals

16. During class session at Mwembeni Primary School, pupils heard a louder noise of an electric shock. Which type of safety sign was to be observed to avoid such accident to occur again? [     ]  
A. Prohibition sign B. Emergency sign     C. Mandatory sign  
D. Warning sign     E. Zebra sign
17. Personal hygiene includes the oral hygiene of an individual. Which of the following specially define oral hygiene?  
A. Cleaning the face and ears     B. Regular brushing of teeth  
C. Wiping tears with a clean piece of cotton cloth  
D. Brush shoes and applying [     ]
18. Diseases are caused by different microorganisms known as germs. Which one among the following diseases is caused by plasmodium? [     ]  
A. HIV/AIDS     B. Malaria C. Cholera D. Chickenpox     E. Marasmus
19. Science is divided into several branches. Which branch deals with the study of living things? [     ]  
A. Geography     B. Chemistry     C. Science D. Physics E. Biology
20. Angel was asked to identify the name of the process in which different substances burn in the presence of oxygen gas to produce heat energy and light. What was her correct answer? [     ]  
A. Conduction     B. Fire     C. Fire extinguisher     D. Lightening  
E. Combustion
21. The science teacher asked his grade four pupils to bring any invertebrate animal found in their environment. Which animal was correctly brought ?  
A. Snail     B. Frog     C. Tilapia     D. Duck     E. Fish [     ]
22. I am a state of matter with definite shape and volume and I am also firm and rigid. Who am I ?  
A. Liquid     B. Gas     C. Solid D. Vacuum E. Air [     ]

23. Tables, graphs and charts are used at which stage of scientific investigation? [    ]  
 A. Data analysis B. Conclusion C. Interpretation of data  
 D. Hypothesis formulation E. Experimentation
24. Meat, fish and eggs are foods containing which nutrients ? [    ]  
 A. Starch B. Vitamins C. Protein D. Minerals E. Fats
25. Which one of the following is a property of ice? [    ]  
 A. It takes the shape of the container B. Heavier than water  
 C. It fills up the whole space D. It is lighter than water  
 E. It is always very hot

**From questions 26 to 30, match the function of the parts of the digestive system in List A with their corresponding parts in List B. Write the letter of the correct answer in the space provided.**

COLUMN A	ANSWER	COLUMN B
26. Mouth	[    ]	A. Where food becomes semi-liquid
27. Oesophagus	[    ]	B. Absorbs nutrients
28. Stomach	[    ]	C. A part where food is chewed
29. Small intestine	[    ]	D. Pushes food to the stomach
30. Rectum	[    ]	E. Stores faeces before removal
		F. Produces bile
		G. Produces pancreatic juice

**From questions 31 to 35, match the function of the part of the digestive system in List “A”**

**with their corresponding parts in List “B”. write the letter of the correct answer in the space provided.**

<b>LIST A</b>	<b>ANSWER</b>	<b>LIST B</b>
31. The part of digestive system which help in absorption of water and minerals.	[     ]	A. Rectum B. Small intestine
32. The part of large intestine which store undigested food temporary	[     ]	C. Large intestine
33. The part of digestive system which helps in absorption of digested food.	[     ] [     ]	D. Stomach E. Enzymes
34. The part of large intestine, which helps in absorption of water and minerals.	[     ]	F. Epiglottis G. Colon
35. The part of digestive system which stores food temporary		

**From questions 36 to 40, Match items in List A with their corresponding responses in List B and write its letter in the space provided.**

<b>COLUMN A</b>	<b>ANSWER</b>	<b>COLUMN B</b>
36. Animals whose bodies are covered by scales and breath using gills	[     ]	A. Insects B. Mammals
37. Animals with soft and moist skin used for gaseous exchange	[     ]	C. Reptiles D. Fish
38. Animals whose bodies are covered by feathers and fly by using wings	[     ]	E. Birds F. Amphibians
39. Animals with dry skin and their bodies are covered by hard scales	[     ]	G. Worms
40. Animals with six legs and their bodies are divided into three parts	[     ]	

**For questions (41-50), fill in the space by choosing the correct answer from the box below. Write your answer in the space provided.**

Mouth cavity, carbohydrates, stomach, chyme, esophagus, protein, small intestine, Radiation, conduction, convection, transparent, translucent, opaque, solar energy, insulators.

41. The nutrient that its digestion start in the mouth is .....
42. The semi-liquid food formed in the stomach is called .....
43. The organ that stores food temporarily is the .....
44. Food moves from the mouth to the stomach through the .....
45. A part of digestive system where absorption of food nutrients takes place .....
46. The method of heat transfer through vacuum is .....
47. Material that does not allow light to pass through them are called .....
48. The form of energy which is produced by the sun .....
49. The materials which allow little amount of light to pass through them .....
50. The method of heat transfer through water and other liquid materials
51. ....

### **SECTION B:**

**Answer all questions in this section.**

**(Each question 1 mark)**

**Living organisms use sense organs to detect stimuli in their internal or external environment.**

52. What is the meaning sense organs?.....
53. Which sense organ detect sound stimuli: .....
54. Which sense organ detect the stimuli of pain: .....
55. Which sense organ detect the stimuli of temperature? .....
56. Which sense organ detect the stimuli of light? .....
57. Which sense organ detect taste stimuli?.....

58. Explain the process on how an eye use light ray from an object to the actual image we see.

.....  
.....  
.....

59. What is the meaning of photosynthesis?

.....  
.....

60. At which part of plant does photosynthesis take place?

.....

61. Explain why animals cannot survive in absence of the plants?

.....  
.....

**Observe the following pictures below and then answer questions 61 to 63 that follow:**



**A**



**B**



**C**



**D**

**Questions:**

62. From the pictures above, identify plants that store food in their roots:

.....

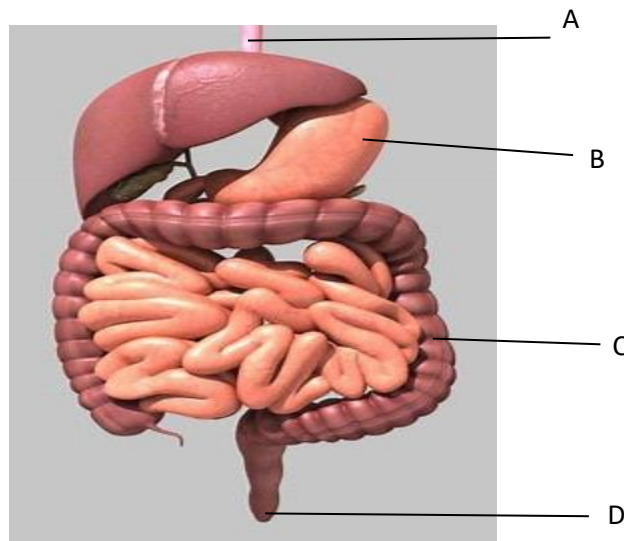
63. From the pictures above, identify plants that store food in their stem:

.....

64. Are the plants shown above flowering or non-flowering plants? Explain

.....

Observe the diagram below to answer the questions 64 to 66 that follow:



65. Which body system is shown by the diagram above? .....

66. Identify parts labeled **A**, **B**, **C**, **D**.

**A** .....

**B** .....

**C** .....

**D** .....

67. What is the function of the part labeled **B**?

.....

68. Mention any disorder of digestive system

.....

69. Mention any cause of constipation:

.....

70. Explain one way to cure a person who is suffering from constipation.

.....

.....

71. Mention any ICT device; .....

.....

72. Mention any example of communicable disease; .....

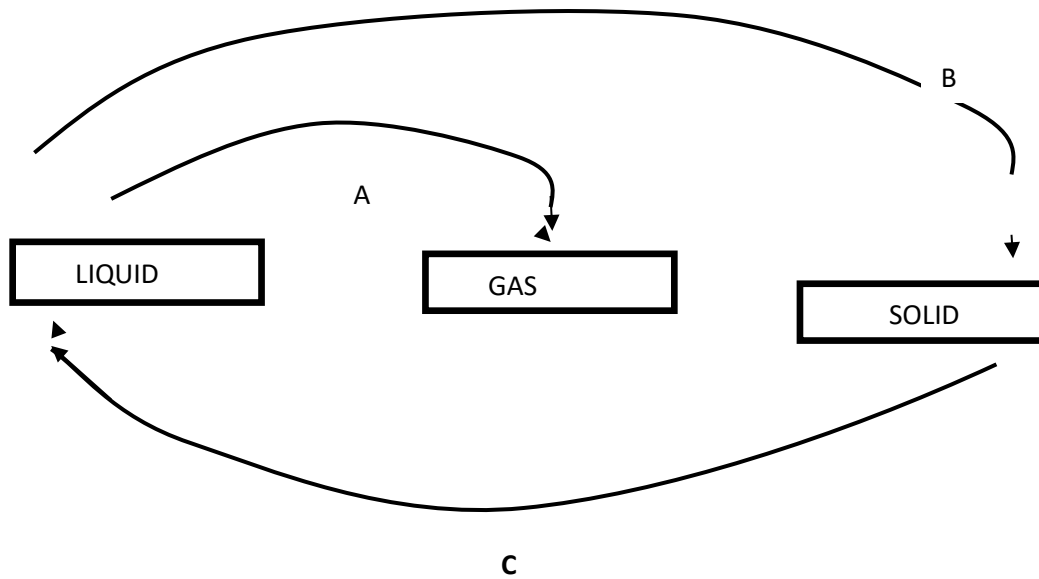
73. What disease can be transmitted through unsafe blood transfusion?

.....

74. Mention one way of preventing the disease in question 72 above

.....

Study the following diagram carefully and then answer the questions 74 to 76 that follows.



75. The process above is known as .....

76. Which process is represented by letter "A" ? .....

77. Which process is represented by letter "C"? .....

**Patterns are everywhere around us:**

78. Identify one computer program that is used for drawing shapes: .....

79. Give one example of natural pattern .....

80. Give one example of man-made patterns: .....

Observe the experiment shown by the diagrams below then answer questions 81 to 83 that follows:



**Questions:**

81. What was the aim of the experiment above?

.....

82. Explain why did the grasshopper in bottle **B** died despite that there was food just like in bottle **A**?

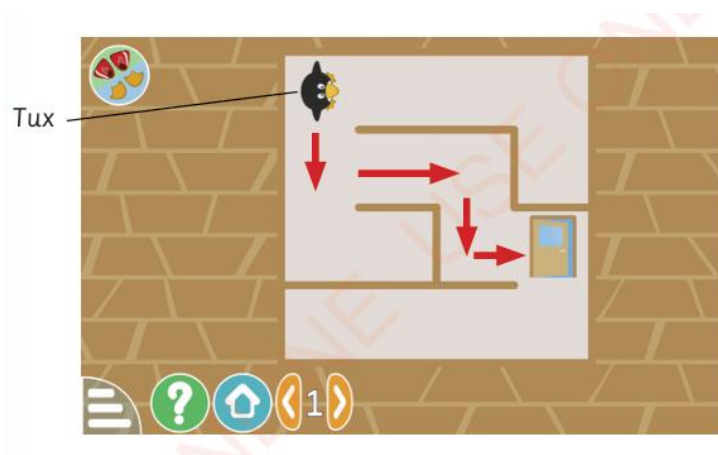
.....  
.....

.....

83. What is the use of oxygen in the body?

.....

**Use the diagram bellow to answer questions 84 to 86 that follows:**



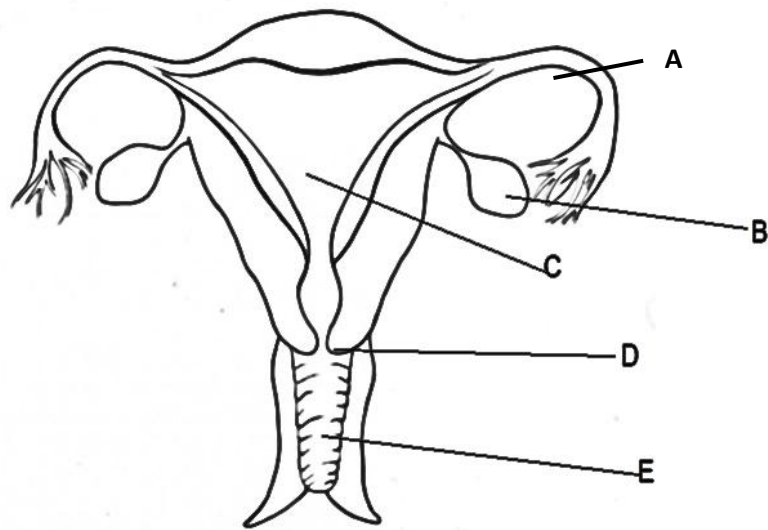
**Questions:**

84. Which type of computer game is shown by the diagram above?

.....

85. When playing it, what is the goal of the computer game shown by the diagram above?  
.....  
.....
86. Mention any other type of computer game apart from the one shown by the diagram above: .....
87. What is likely to happen if testes will be cut off from a male reproductive system? .....
88. A girl was born with disorder in the fallopian tube, which process would likely **not** to take place? .....
89. Name organ in male reproductive system that is responsible for production of gametes: .....
90. In the male reproductive system, there are three glands which produce fluid, name any organ among of them; .....
91. A standard five pupil was asked about the other name of vas deferens, what was the correct response? .....
92. All organisms on earth's surface reproduce either sexually or asexually. Give any example of those who reproduce asexually:  
.....
93. What is name given to a young plant that emerges from a seed after germination? .....
94. In which stage of human growth and development one, experiences memory loss and decreased hearing and vision ability?  
.....
95. There are five requirements for plant growth and development. Mention any of them; .....
96. Write any physical change occurring in girls during puberty?  
.....

Observe the diagram below then answer questions 97 to 100 that follows:



**Questions:**

97. Name part labelled **B**, from the diagram above: .....
98. Which letter represent the site for implantation of zygote? .....
99. Name the system represented by the diagram above: .....
100. Both male and female reproductive systems may show or being affected by some problems. Mention any disorder of the reproductive system shown above: .....