

NAME \_\_\_\_\_ CLASS VI \_\_\_\_\_

**THE UNITED REPUBLIC OF TANZANIA,  
PRIME MINISTER'S OFFICE  
REGIONAL ADMINISTRATION AND LOCAL GOVERNMENTS**



**MARTIN LUTHER SCHOOL**

P. O. Box 1786 Dodoma. Tel. +255 26 2395029, +255 784 449098

Fax +255 26 2395030 ([www.martinlutherschooldodoma.sc.tz](http://www.martinlutherschooldodoma.sc.tz))

***"High Quality Education for the New Generation"***

---

**SCIENCE – HOLIDAY PACKAGE JUNE 2026**

**STANDARD VI**

**PUPIL'S NAME:** \_\_\_\_\_

**INSTRUCTIONS**

- 1. Remember to write your three names properly.**
- 2. Answer all the questions as per instructions.**
- 3. Read all questions carefully before answering.**
- 4. This holiday package should be returned to school when we open.**

**SECTION A****Answer all questions in this section.****From question (1-25) choose the most correct answer among the given alternatives and write its letter in the brackets provided.**

1. Beverages such as soda and juice stay for long without decaying. Which among the following gas is used in the preservation of drinks?  
A. Nitrogen    B. Argon    C. Hydrogen    D. Carbondioxide  
E. Oxygen [    ]
2. During photosynthesis process which part of leaf trap sunlight needed for the process to take place?  
A. Stomata    B. Main vein    C. Lamina    D. Cuticle  
E. Chlorophyll [    ]
3. A mason is constructing a store building of two floors. Which machine will the mason use to lift the bricks easily?  
A. Rope    B. Lever    C. Pulley    D. Hook    E. Wheel [    ]
4. Which one of the following is **not** a method of soil conservation?  
A. Mono cropping    B. Zero grazing    C. Contour farming    D. Mulching  
E. Afforestation [    ]
5. For proper growth of leaves, protein synthesis and promotion of stem growth of plant, which of the following macro nutrients is needed?  
A. Calcium    B. Phosphorus    C. Oxygen    D. Potassium  
E. Nitrogen [    ]
6. In real life, machines usually do not have 100% efficiency. What could be a reason for this fact?  
A. There is friction force between moving parts of machines  
B. All machines' users do not apply enough effort  
C. All machines are not well designed    D. Such machines do not simplify work  
E. Machine users are applying a lot of effort on machines [    ]
7. What would be the mechanical advantage of machine, if the load is 45 kilograms and the effort applied is 9 kilograms?  
A. 54 kilograms    B. 5    C. 4    D. 5kilograms    E. 10 [    ]
8. When preparing a simple electric circuit, which tools are necessary to be connected to light up a bulb?  
A. Bulb, wire and switch    B. Dry cell, wire and bulb.  
C. Dry cell, fuse and circuit breaker    D. Fuse, wire and bulb  
E. Switch, earth wire and fuse [    ]

9. Which gas among the following is used in refrigerator to keep things fresh for long time without being spoilt?  
 A. Oxygen    B. Nitrogen    C. Argon    D. Carbondioxide  
 E. Hydrogen [    ]
10. Which among the following are types of soil you will advice your grandmother to grow crops in your village because of its fertility and suitability for agriculture?  
 A. Sandy soil    B. Clay soil    C. Loam soil    D. Dry sand soil  
 E. Wet clay soil [    ]
11. A farmer observed the leaves of his maize crops and found that they have turned into yellow, have stunted growth and have decreased in protein synthesis. Which nutrient was deficient in the soil of the farm?  
 A. Potassium    B. Iron    C. Zinc    D. Phosphorus    E. Nitrogen [    ]
12. Why are you advised against putting plants in a room with insufficient air supply during the night?  
 A. Because plants use oxygen at night to manufacture food  
 B. Because during the night plants use oxygen to produce energy  
 C. Because the amount of oxygen in air increase at night  
 D. Because the amount of oxygen inside may decrease inside the room  
 E. Because at night plants use carbon dioxide to produce energy [    ]
13. Air is the mixture of different invisible gases. Which gas occupies 20.9% of air in the atmosphere?  
 A. Oxygen    B. Nitrogen    C. Carbon dioxide    D. Argon    E. Helium [    ]
14. Which of the following gases is used in the processing of industrial beverages?  
 A. Hydrogen    B. Nitrogen    C. Carbondioxide    D. Oxygen    E. Argon [    ]
15. For a fire to start it requires a certain gas. Which gas is required to extinguish fire?  
 A. Nitrogen    B. Oxygen    C. Argon    D. Carbondioxide    E. Neon [    ]
16. A certain village has a soil which does not support the proper growth of crops. As a scientist which crops will you advise them to plant so as to add fertility of the soil?  
 A. Leguminous plants    B. Cash crops    C. Food crops    D. Hydrophytes  
 E. Xerophytes [    ]
17. The growth of plant part toward the source of water is known as:  
 A. Chemotropism    B. Geotropism    C. Phototropism    D. Hydrotropism  
 E. Thigmotropism [    ]
18. A very hot sun (high intensity of sunlight) causes the following negative effects to plants growth EXCEPT:  
 A. It destroys chlorophyll    B. It may cause plant to die    C. It may cause plants leaves to dry  
 D. It may cause photosynthesis to stop  
 E. It may cause plants to lack carbondioxide [    ]
19. The amount of nitrogen that is in air is 78%. How is it used in hospitals?  
 A. To make protein    B. To produce nitric acid    C. To store male and female gametes  
 D. To make industrial fertilizers    E. To make plastic and nylon [    ]

NAME \_\_\_\_\_ CLASS VI \_\_\_\_\_

20. The following are the importance of air in our environment EXCEPT:  
 A. It helps in transfer of sound waves    B. It helps in composition of dead living things  
 C. It supports life of living things        D. It may be used in production of electricity  
 E. It may be used in drying of things [    ]
21. Which one of the following inert gases is used for welding and metal cutting?  
 A. Argon    B. Neon    C. Helium    D. Nitrogen    E. Carbon monoxide [    ]
22. All the following factors are required for a seed to germinate EXCEPT:  
 A. Water    B. Oxygen    C. Nutrients    D. Optimum temperature  
 E. Warmth [    ]
23. Which of the following is **not** raw material for photosynthesis?  
 A. Carbondioxide    B. Water    C. Chlorophyll    D. Sunlight  
 E. Temperature [    ]
24. Wendo wanted to construct her house. Which type of soil will you suggest for construction use in this activity?  
 A. Fertile soil    B. Sandy soil    C. Clay soil    D. Loam soil    E. Cement [    ]
25. Class Six pupils were identifying parts of a plant. Which part did they identify that absorb water from the soil?  
 A. Leaves    B. Fruits    C. Roots    D. Stem    E. Flowers [    ]

**From question 26 to 30, match the electric concepts in LIST A with their corresponding meaning in LIST B by writing the letter of the correct answer in the space provided.**

LIST A	ANSWER	LIST B
26. Is fertile soil and suitable for agriculture	[    ]	A. Soil erosion B. Water
27. Mixed with cement for building purposes	[    ]	C. Loam soil D. Clay soil
28. Transfer of soil from one area to another	[    ]	E. Farmyard manure F. Urea
29. Natural fertilizer	[    ]	G. Sandy soil H. Silt
30. Used in modeling pots as its particles are very sticky	[    ]	

**From questions 31 to 35, match the items in COLUMN A with their corresponding response in COLUMN B by writing the letter of the correct answer in the space provided.**

COLUMN A	ANSWER	COLUMN B
31. Mixture of different gases	[    ]	A. Nitrogen B. Oxygen
32. Occupies 0.03% of air	[    ]	C. Air D. Argon
33. Occupies 78% of air	[    ]	E. Other gases F. Carbon dioxide
34. Occupies 0.17% of air	[    ]	G. Hydrogen
35. Occupies 20.9% of air	[    ]	

NAME \_\_\_\_\_ CLASS VI \_\_\_\_\_

From question 36 to 40, matching the concept in COLUMN A with their correct response in COLUMN B by writing the letter of the correct answer in the space provided.

COLUMN A	ANSWER	COLUMN B
36. Oxygen	[     ]	A. Site for photosynthesis in plants
37. Nitrogen	[     ]	B. Absorbs or traps sunlight for photosynthesis
38. Leaves	[     ]	C. Absorbs water from the soil in plants
39. Roots	[     ]	D. Helps to breakdown food to release energy during respiration
40. Chlorophyll	[     ]	E. Occupy highest percentage in the atmosphere
		F. Used in rain formation

From questions 41 to 55, fill in the gaps by choosing the correct answer from the box below. Write your answer in the space provided.

Micropyle, Root hair, Stomata, Chlorophyll, Phloem, Xylem, Lamina, Cuticle, Compass, Magnet, Dynamo, Vertebrates, Living things, Invertebrates, Non-living things, Inlet pipe, Digester tank, Cover, Outlet pipe, Gas tube, Gas valve, Biogas energy.

41. The green pigment that traps sunlight energy during photosynthesis is called:  
\_\_\_\_\_
42. The very tiny holes that allow exchange of gases in plant leaf are called: \_\_\_\_\_
43. Conductive tissue that transport food from the leaves to lower parts of a plant is called:  
\_\_\_\_\_
44. The part of plant that absorbs water and mineral salts from the soil is called:  
\_\_\_\_\_
45. The tissue that transports water and minerals from the roots to upper parts of plant is called:  
\_\_\_\_\_
46. It carries the biogas generated in the digester tank to the place where it is consumed:  
\_\_\_\_\_
47. It is used to remove residue of the materials used to produce biogas \_\_\_\_\_
48. This is a tank in which raw materials decompose to produce biogas \_\_\_\_\_
49. The part of digester tank which open to allow or close to prevent flow of gas to or from the digester tank \_\_\_\_\_
50. A part of digester tank through which the raw materials that feed the digester pass  
\_\_\_\_\_
51. Cows, goats and human beings have backbone, how do we call them scientifically \_\_\_\_\_
52. All insects belong to which group of animals \_\_\_\_\_
53. Creatures that possess life are collectively called \_\_\_\_\_
54. A piece of metal which has the property of attracting iron, cobalt and nickel materials is known as  
\_\_\_\_\_
55. An instrument with a suspended magnetic needle which can move and show direction is called  
\_\_\_\_\_

**SECTION B**

**Answer all questions in this section.**

**(Each question 1 mark)**

**Magnet is a device that attracts things of iron nature:**

56. state the law of magnets: \_\_\_\_\_

57. Identify any shape of magnet: \_\_\_\_\_

58. Jumanne hung a bar magnet freely in air. To which direction of the earth will the south pole of the magnet point? \_\_\_\_\_

**Inert gases are elements that do not react with other elements to form compound.**

59. Give any example of inert gas: \_\_\_\_\_

60. Suggest any use of argon gas in our daily life. \_\_\_\_\_

61. What is the percentage of inert gas in air? \_\_\_\_\_

62. State the law useful in designing electrical circuits, and electrical appliances: \_\_\_\_\_

63. Write down the formula used show the law you have stated above: \_\_\_\_\_

64. A current of 13A was flowing through a circuit of  $3.9\Omega$ . what is the electromotive force of the source in this circuit?

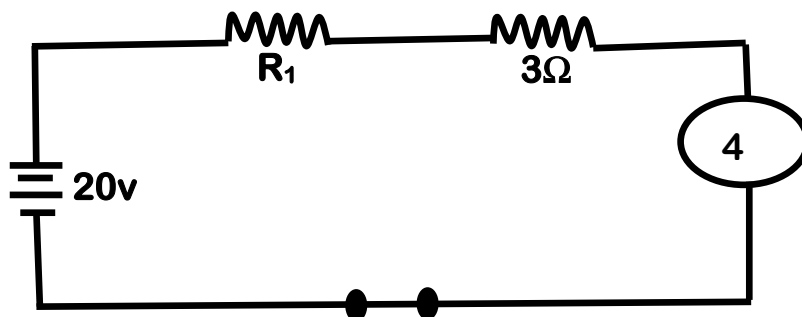
\_\_\_\_\_

\_\_\_\_\_

\_\_\_\_\_

\_\_\_\_\_

**Study the diagram below and answer questions 65 to 67 that follows:**



65. Find the value of  $R_1$  in circuit above:

\_\_\_\_\_

\_\_\_\_\_

\_\_\_\_\_

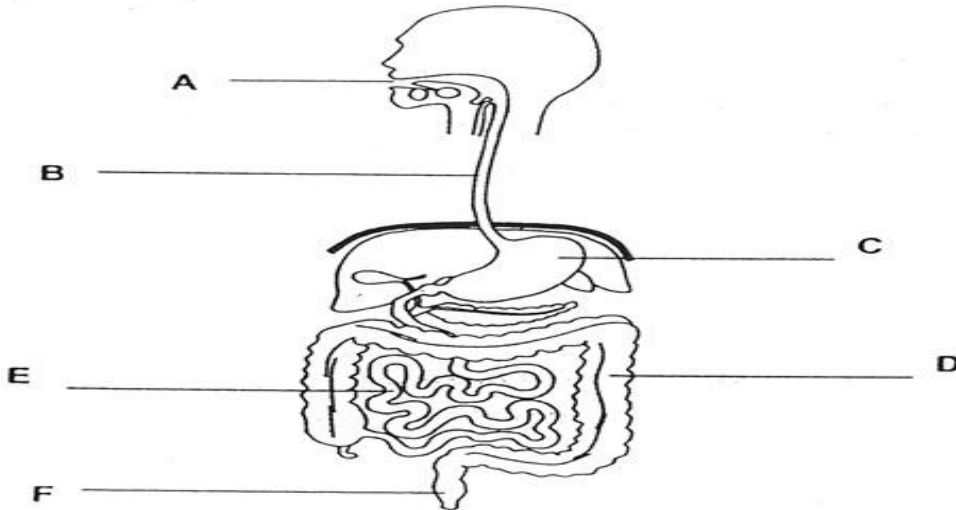
\_\_\_\_\_

NAME \_\_\_\_\_ CLASS VI \_\_\_\_\_

66. What type of circuit is that? \_\_\_\_\_

67. What is the other type of circuit apart from the one shown above?  
\_\_\_\_\_

Observe the diagram below and the answer questions 68 to 70, that follows:



**Questions:**

68. Which body system is shown by the diagram above? \_\_\_\_\_

69. What is the name of part shown by letter E? \_\_\_\_\_

70. What is the difference between parts labeled C and D?  
\_\_\_\_\_  
\_\_\_\_\_

**Answer the following questions by writing the correct answer:**

71. What is computer? \_\_\_\_\_  
\_\_\_\_\_

72. Identify the main part of a computer that is tangible: \_\_\_\_\_

73. Explain the primary function of a computer? \_\_\_\_\_  
\_\_\_\_\_

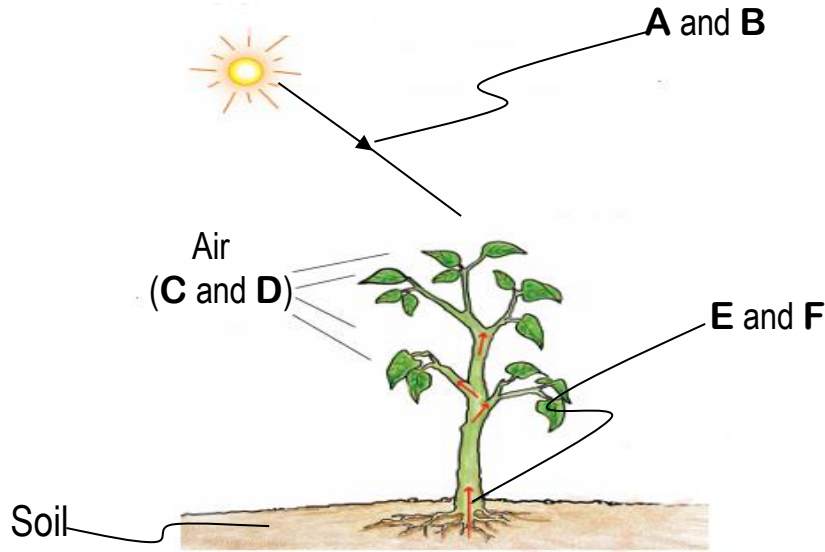
**In order for plant to grow properly there are some essential requirements needed such as air and water.**

74. What is the meaning of growth in plants?  
\_\_\_\_\_

75. Standard six pupils were told to mention the essentials needs for plant growth. You as relevant member of the class, identify any four of these essentials for plant growth:  
\_\_\_\_\_

76. Suggest any use of water in growth of plant growth:  
\_\_\_\_\_

Examine a figure below showing the essential needs for plant growth and answer the questions 77 to 79 that follows.



**Questions**

77. Which essential needs is represented by letter **B**?

**B** → \_\_\_\_\_

78. What does letter **C** represent?

**C** represent: \_\_\_\_\_

79. By which way do plants obtain the essential needs labelled with letters **E** and **F**?

\_\_\_\_\_

**In Mtakuja village the farmers are facing challenge of their soil not holding water for a long time, therefore they decided to use irrigation scheme and application of inorganic fertilizer to get good yield.**

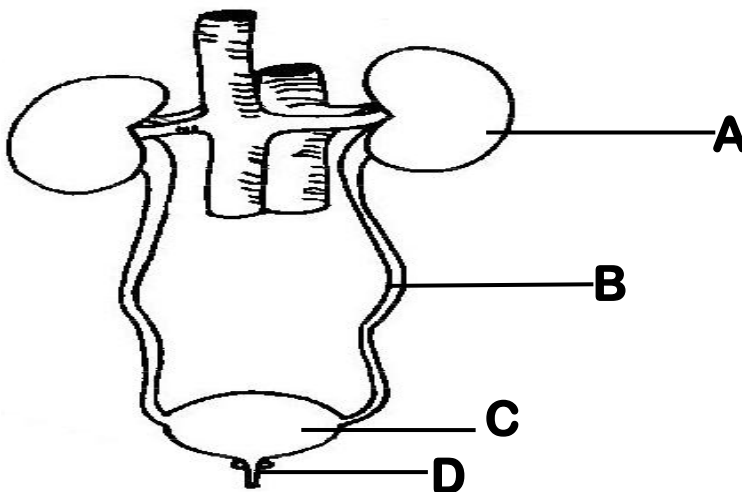
80. Which type of soil is found in Mtakuja village? \_\_\_\_\_

81. Why is the type of soil present in Mtakuja village not suitable for agriculture?

\_\_\_\_\_

82. Which activity can best suit the type of soil in Mtakuja village? \_\_\_\_\_

Observe the diagram below and answer questions 83 to 85 that follow.



**Questions**

83. Identify the part marked with letter **D**: \_\_\_\_\_

84. Which letter represent the part that filter blood? \_\_\_\_\_

85. What is the relationship between parts marked **A** and **C**?

\_\_\_\_\_

\_\_\_\_\_

Observe the following types of pulley and then answer questions 86 to 88 that follows:

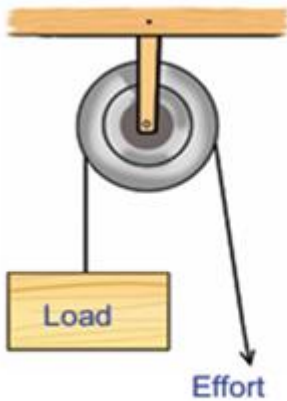


FIGURE 1

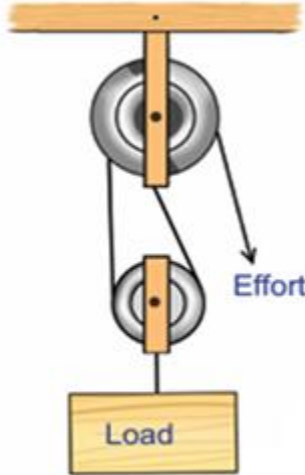


FIGURE 2

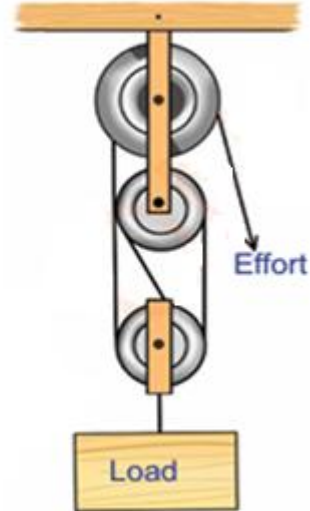


FIGURE 3

**Questions:**

86. Which simple machine is shown by the diagrams above? \_\_\_\_\_

87. If all the machines above were used to raise a load of 1000kg, in which machine will the work become easier? \_\_\_\_\_

88. Suppose the machine in figure 3 was used to raise a load of 1200kg using an effort of 400kg, calculate the efficiency of a machine:

\_\_\_\_\_

\_\_\_\_\_

\_\_\_\_\_

\_\_\_\_\_

89. Explain why a person who pushed a wall for a long time is considered as to have done no work?

\_\_\_\_\_

\_\_\_\_\_

NAME \_\_\_\_\_ CLASS VI \_\_\_\_\_

90. Jane used a force of 100N to push a wheelbarrow to a building site 20 meters away. Calculate the work done by Jane:

---

---

---

---

91. What is the angle between plane mirror and a light ray reflected in a periscope?

---

92. Which type of lens is used to start fire? \_\_\_\_\_

93. Which type of lens is useful in the car front light design? \_\_\_\_\_

94. What is a poisonous product produced when excess proteins are broken down in the body?

---

95. Which body organ excrete carbon dioxide as a waste gas from our bodies?

---

96. Give one example of the disorder of the reproductive system: \_\_\_\_\_

97. What is ecology? \_\_\_\_\_

98. Explain how animals depend on plants?

---

99. Where does fertilization take place in the female human reproductive system?

---

100. Which part of male reproductive system produces male gametes?

---

Education is my life (Proverbs 4:13)

Mobile: 0784 449 098 \* 25526 239 5029, Web: [www.martinlutherschoolsdodoma.sc.tz](http://www.martinlutherschoolsdodoma.sc.tz)